



Before photo

Our Lady of the Lake Parish North Seattle

Fr. Tim Clark wanted an icon of the Crucifixion to replace the Crucifix, which was difficult to see. He hoped that the icon would make the space more prayerful. The church is large and can hold 800 people.

Notice the curved elements in the church:

- * Ceiling**
- * Wood arc above altar area**
- * Lighting**
- * Brick arches on side aisles**
- * Arc at bottom of white marble altar on brick wall**



The rear marble altar, upon which the tabernacle rests, is 10 feet wide. The brick wall has a slight curve.



The geometry and drawing were done on a small scale. When I visited the parish in March of 2019, I enlarged the drawings to actual size.



During my March 2019 visit to the parish, I brought a prepared panel with a drawing of the Mother of God on it. The school children were invited to touch the icon as a prayer of blessing



Board construction
took a bit longer
due to the large size
of the triptych.



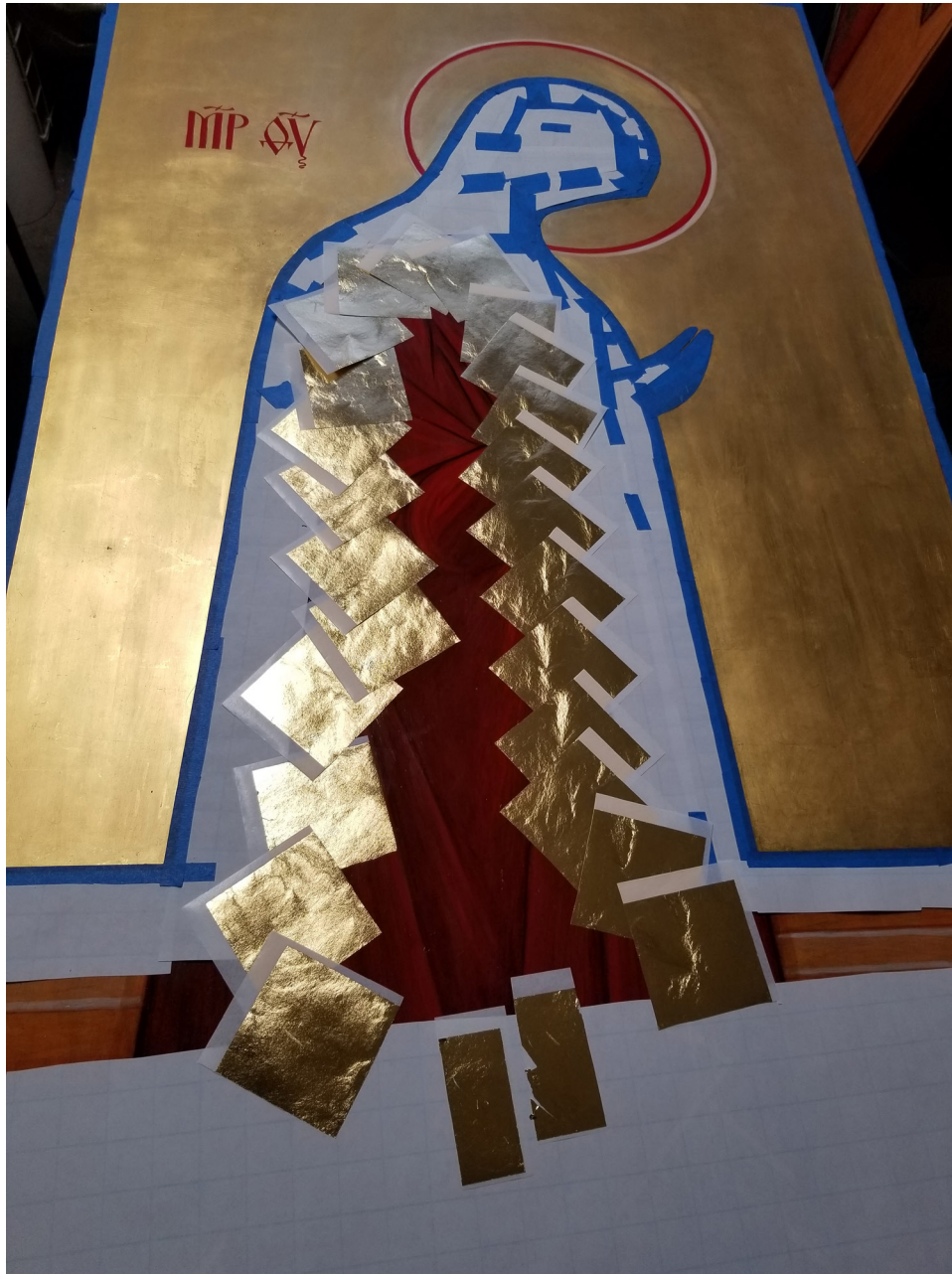
The rough sketch of John did not work with the entire composition. So I redrew it.



Then John's sleeve did not work--too clunky. So I redrew and repainted it.



Final result



The first application of varnish was flawed, so I had to reapply gold to all three panels. Since the surface was varnished, I used another layer of varnish as the size for the gold. The gold was very shiny.



**Center
Panel--5 feet
wide by 8 feet
2 inches tall**

**Side
panels 2.5
feet wide by 6
feet 3 inches
tall**

**Total width
10 feet**



After

**Four men
worked 6
hours to install
the triptych.**



Inscription for Mary:

**Greek letters MP
(actually MR) stand for
Mother.**

**Letters OY (actually
F or TH and Y is U) stand for
Theotokos (God bearer).**

**The symbol above each set
of letters is a tilde, meaning
an abbreviation.**



Detail
St. John



Detail of Christ

Inscription in three languages:

Latin INRI abbreviation for Jesus of Nazareth, King of the Jews

Greek Slavonic IC XC is Jesus' human name, (pronounced (Iesus Christos) with tilde above each set indicating an abbreviation

English

According to the gospels of St. Luke and St. John, the inscription was originally written in three languages:

Greek

Latin

Hebrew



In every icon of Christ, IC XC indicates Christ's human name.

In Christ's halo are more Greek letters: O, W, N. Actually the W, Omicron (O), is hidden because of the angle of Christ's head. The W would have had two diacritical symbols indicating pronunciation.

O W N stands for the words God spoke to Moses from the Burning Bush: I AM WHO AM. Thus Christ's Divine and human names clearly identify his dual nature: human and divine.





**At Mass
Feb. 23, 2020**